



# GAT MONTHLY MEMBERSHIP PROGRESS REPORT

Results as of: 3/31/2023

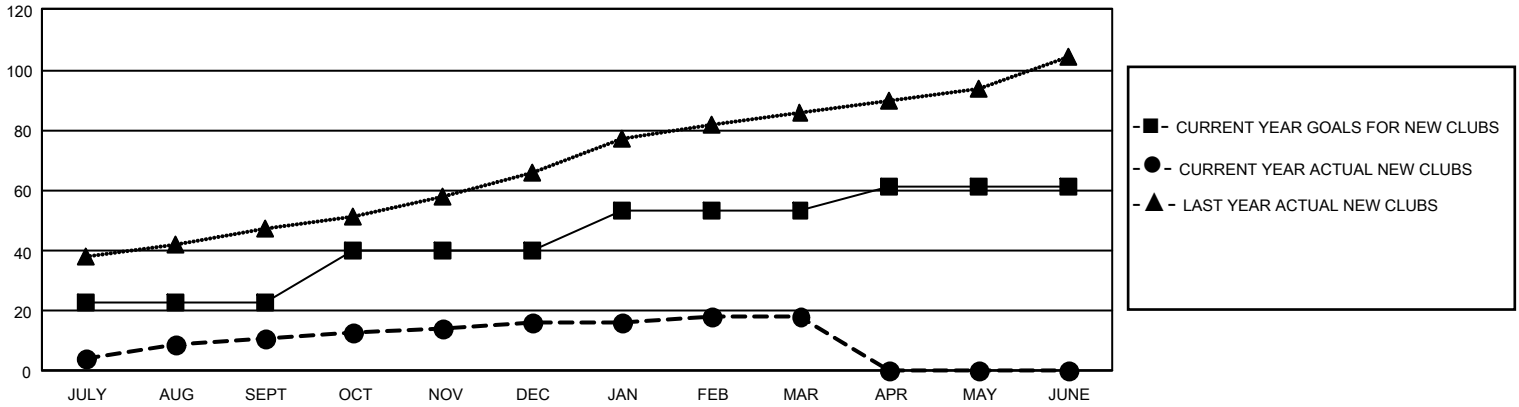
## GMT Constitutional Area 6, Group J

REPORT DOES NOT INCLUDE CLUBS IN UNDISTRICTED AREAS.

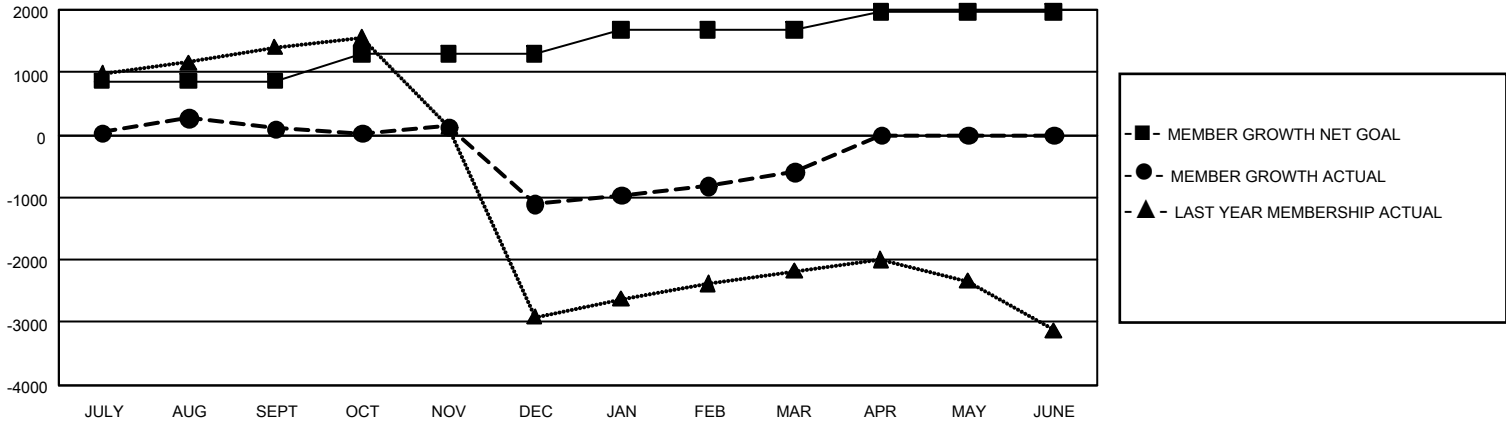
Clubs			
RESULTS FOR 2022-2023			
QUARTER	NEW CLUB GOAL	NEW CLUBS	DROPPED CLUBS
JULY/AUG/SEPT	69	11	103
OCT/NOV/DEC	51	5	21
JAN/FEB/MAR	39	2	37
APR/MAY/JUNE	24	0	0

Members			
RESULTS FOR 2022-2023			
QUARTER	MEMBER GROWTH NET GOAL	MEMBER GROWTH ACTUAL	DROPPED MEMBERS ACTUAL (including transfers)
JULY/AUG/SEPT	860	1,077	872
OCT/NOV/DEC	435	995	2,106
JAN/FEB/MAR	385	1,009	301
APR/MAY/JUNE	285	0	0

GOALS AND ACTUAL NEW CLUBS CUMULATIVE



GOALS AND ACTUAL MEMBERS CUMULATIVE



<b>DROPPED CLUBS: 161</b>	407 CLUBS OF 943 ADDED 1 OR MORE NEW MEMBERS	<b>GENDER DISTRIBUTION</b>	
		MALE 17,569 (62.05%) FEMALE 10,741 (37.93%) NON BINARY 0 (0.00%) PREFER NOT TO ANSWER 5 (0.02%)	
<b>DROPPED MEMBERS</b>		<a href="#">CLICK HERE FOR CUMULATIVE MEMBERSHIP DATA</a>	TOTAL FAMILY UNIT MEMBERS 18,898
DECEASED 60 CLUB CANCELLED 489 OTHER 2,730 <b>TOTAL 3,279</b>	FAMILY MEMBERS PAYING HALF DUES 12,073		